

Подн. и дата

Изм. № докл.

Взам. инв. №

Подн. и дата

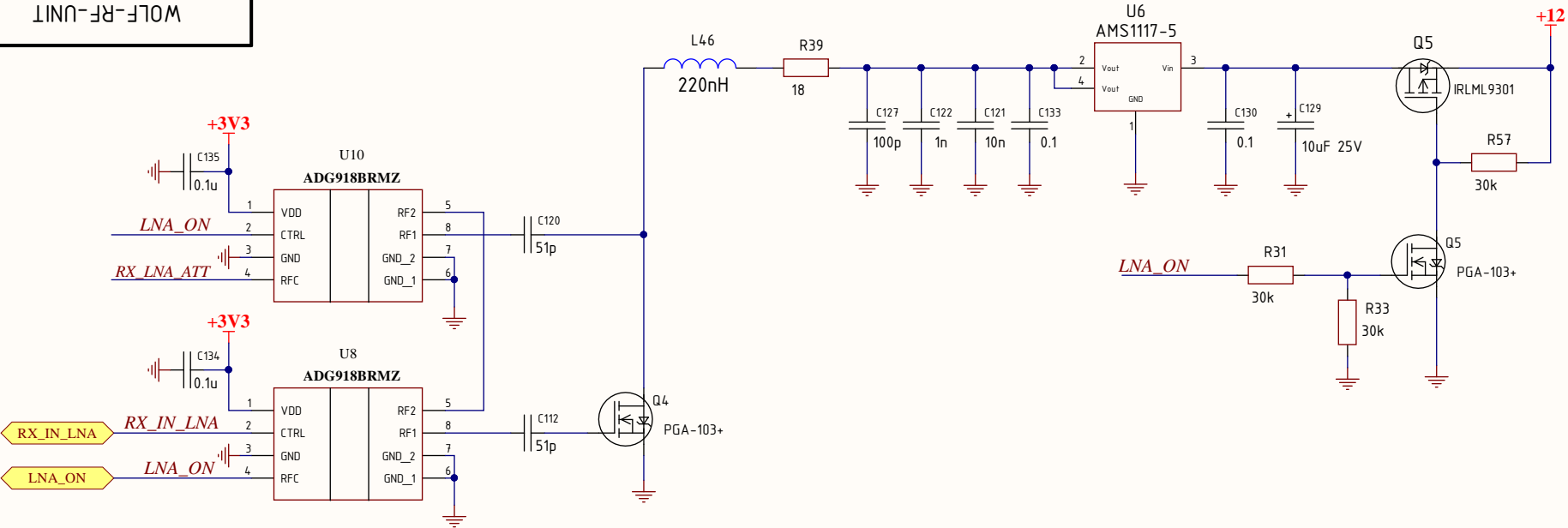
Изм. № подл.

Изм.	Лист	№ докум.	Подн.	Дата

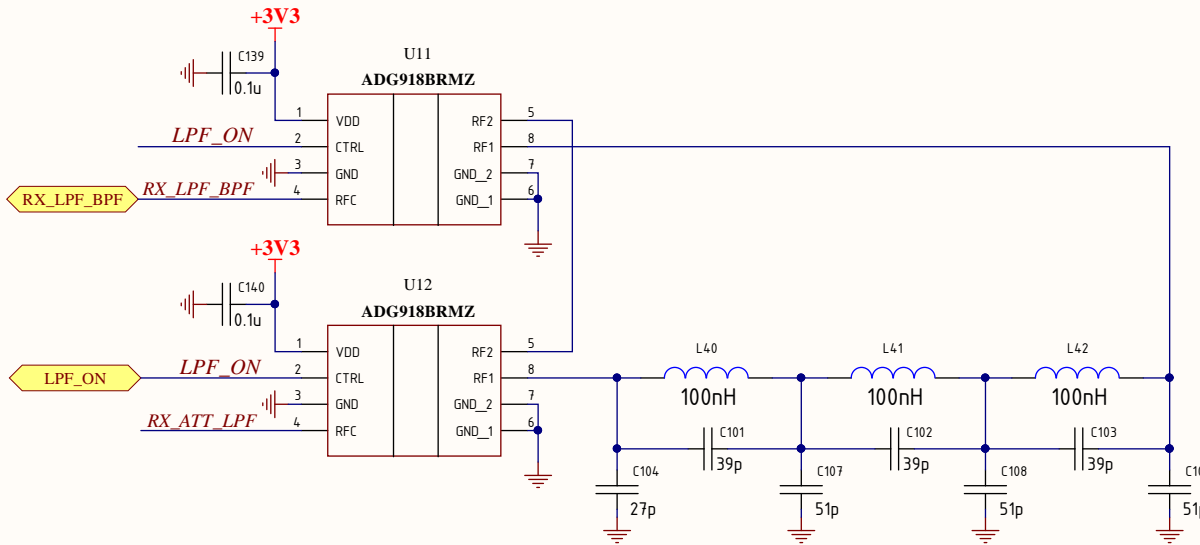
WOLF-RF-UNIT

Лист

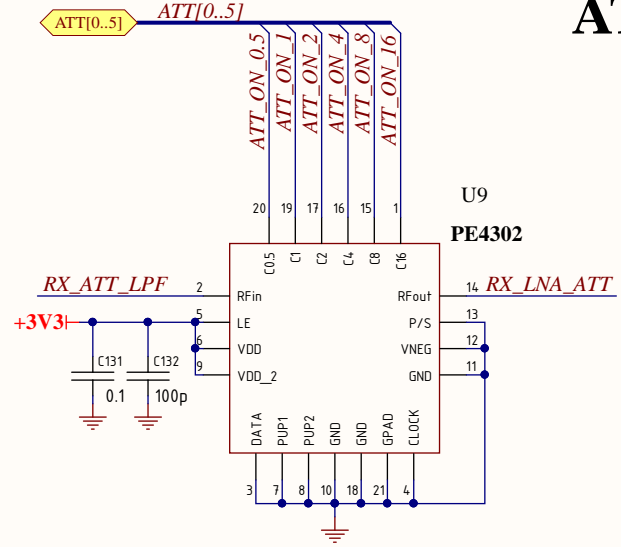
3

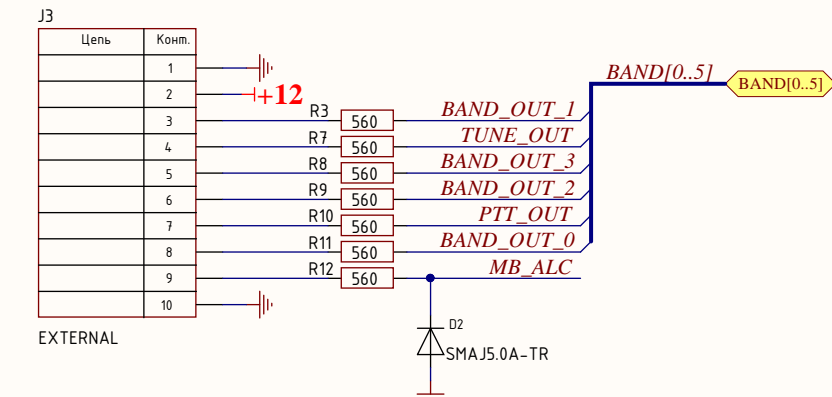
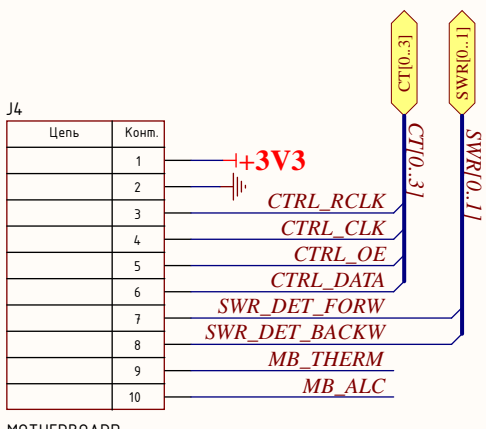
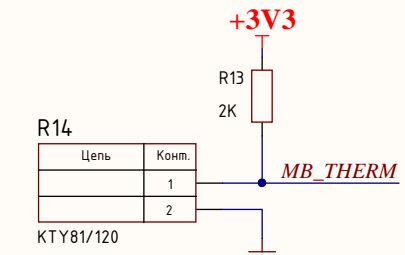
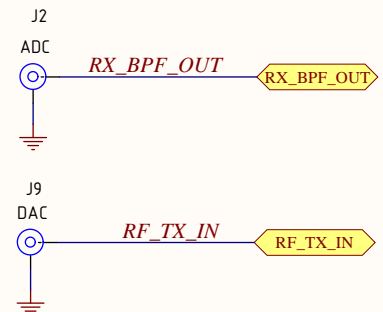
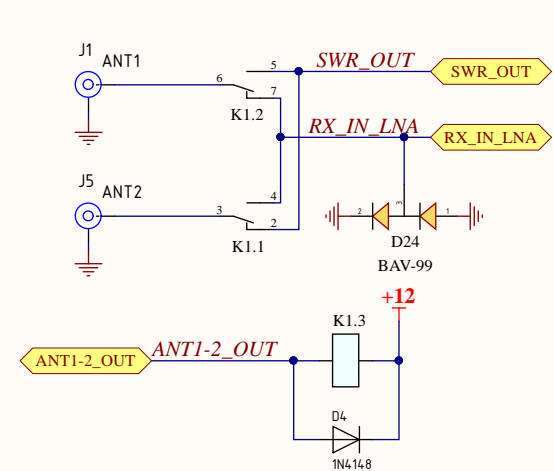


RX_LPF



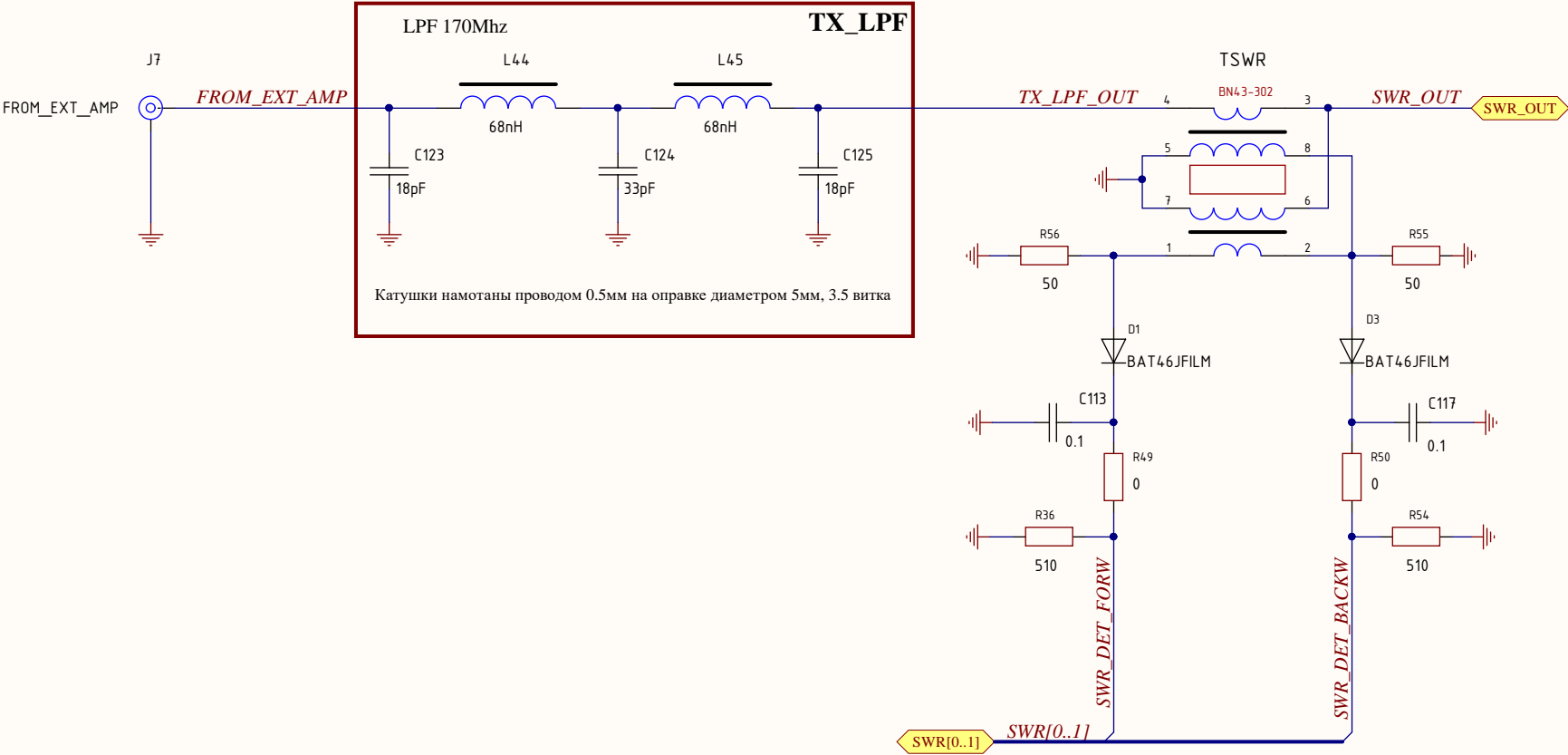
ATT





Изм. № подл.	Подп. и дата
Взам. инв. №	Изм. № дубл.
Изм. № подл.	Подп. и дата





Изм.	Лист	№ докум.	Подп.	Дата
Изм. № подл.	Подп. и дата	Изм. № дубл.	Подп. и дата	Изм. № дубл.
Взам. инв. №				

Comment	Descrion	Designator	Footprint	LibRef	Quantity
0.1u		C1, C2, C3, C4, C141, C142	CH0201C	Capacitor	4
47pf		C5, C13	CH0805C	Capacitor	2
10pf		C6, C124	CH0805C	Capacitor	2
10pf		C7	CH0805C	Capacitor	1
47p		C8	CH0805C	Capacitor	1
10pf		C11	CH0805C	Capacitor	1
61pf		C12	CH0805C	Capacitor	1
100pf		C14, C22	CH0805C	Capacitor	2
120pf		C15, C21	CH0805C	Capacitor	2
150pf		C20	CH0805C	Capacitor	1
150pf		C23, C44, C46	CH0805C	Capacitor	3
270pf		C24, C32, C45, C46	CH0805C	Capacitor	4
180pf		C33, C34	CH0805C	Capacitor	2
560pf		C35, C59	CH0805C	Capacitor	2
470pf		C36, C60	CH0805C	Capacitor	2
1n		C38, C40, C122	CH0805C	Capacitor	3
1n8		C47, C48, C72, C115	CH0805C	Capacitor	4
820pf		C58	CH0805C	Capacitor	1
1.5nF		C61	CH0805C	Capacitor	1
1.2nF		C62, C74	CH0805C	Capacitor	2
3.3nF		C75, C76	CH0805C	Capacitor	2
47uF 100V		C81, C111	CH0805C	Capacitor	2
6.5-30pf		C86, C87	CH0805C	Capacitor	2
120p		C88, C90	CH0805C	Capacitor	2
100p		C89, C127, C132	CH0805C	Capacitor	3
2.2uF 100V		C91, C93, C95	CH0805C	Capacitor	3
1n8 100V		C92, C94, C105	CH0805C	Capacitor	3
20p		C101, C102, C103	CH0805C	Capacitor	3
27p		C104	CH0805C	Capacitor	1
01p		C107, C108, C109, C112, C120	CH0805C	Capacitor	5
0.1		C113, C114, C116, C117, C118, C130, C131, C133, C136, C137	CH0805C	Capacitor	10
47uF 25V		C119	TANTAL_B	TantalCap	1
10n		C121	CH0805C	Capacitor	1
10pf		C123, C125	CH0805C	Capacitor	2
1u		C126, C128	CH0805C	Capacitor	2
10uF 25V		C129	TANTAL_B	TantalCap	1
0.1u		C134, C135, C139, C140	CH0805C	Capacitor	4
BA746B&M		D1, D3	DWB	Diode	3
9AA45,5A-7B		D2	SOD123	Diode	1
1N4148		D4	SOD123	Diode	1
5514		D18, D23	SOD123	Diode	2
BAV99		D24	SOT23_132	BAV99	1
ANT1	RF	J1	CON_SMA	SMA	1
ADC	RF	J2	CON_SMA	SMA	1
EXTERNAL		J3	CON_053751010	10-Connector	1
MOTHERBOARD		J4	CON_053751010	10-Connector	1
ANT2	RF	J5	CON_SMA	SMA	1
TD_EXT_AMP	RF	J6	CON_SMA	SMA	1
PHOM_EXT_AMP	RF	J7	CON_SMA	SMA	1
C120V		J9	CON_300-62P-5.0	2-Connector	1
DAC	RF	J9	CON_SMA	SMA	1
IM06		K1	IM06	IM06-1	1
270nH		L1, L7	LT1210	TRANS	2
82nH		L2	LT1210	TRANS	1
100nH		L3	LT1210	TRANS	1
470nH		L4, L15	LT1210	TRANS	2
150nH		L5, L6	LT1210	TRANS	2
330nH		L8, L10, L11	LT1210	TRANS	3
1uH		L9, L17	LT1210	TRANS	2
560nH		L12, L16	LT1210	TRANS	2
820nH		L13, L21	LT1210	TRANS	2
1.5uH		L14, L18, L25	LT1210	TRANS	3
1.8uH		L19, L26	LT1210	TRANS	2
680nH		L20	LT1210	TRANS	1
2.2uH		L22, L30, L31	LT1210	TRANS	3
2.7uH		L23, L27	LT1210	TRANS	2
4.7uH		L24	LT1210	TRANS	1
2.5uH		L28	LT1210	TRANS	1
5.6uH		L29	LT1210	TRANS	1
6.8uH		L32	LT1210	TRANS	1
8.2uH		L33	LT1210	TRANS	1
8.2nH		L34, L35, L36	LT1210	TRANS	3
10uH		L37, L38, L43	TRANS	TRANS	3
1uH		L39, L47	IND_ R24	Inductor ring	2
100nH		L40, L41, L42	IND_ R24	Inductor ring	3
68nH		L44, L45	TRANS	TRANS	2
220nH		L46	IND_ R24	Inductor ring	1
Model =		L7		Inductor-3	1
RD07MVS1		Q1, Q3	RD07	N	2
IRLM4V301		Q2, Q5	D2PM6_132	N-KANAL	2
PGA-1024		Q4, Q6	SOT23_132	N-KANAL	2
RS3123		Q7, Q8	SOT23_132	N-KANAL	2
560		R1, R7, R8, R9, R10, R11, R12	CH0805R	Resistor	7
2K		R13	CH0805R	Resistor	1
RT817130		R14	CON_CWF-2	2-Connector	1
56		R27, R44	CH0805R	Resistor	2
1K		R28, R29, R32, R35, R42, R43, R46, R65, R71, R72, R73, R74, R75, R76, R77, R78, R79, R80, R81, R82, R83, R84, R85	CH0805R	Resistor	23
1K		R30, R40	RES_3296W	Adj resistor	2
30k		R31, R33, R37, R41, R45, R57, R70	CH0805R	Resistor	7
0.6		R34, R38	CH0805R	Resistor	2
010		R36, R54	CH1206R	Resistor	2
18		R39	CH0805R	Resistor	1
300		R47, R48	CH0805R	Resistor	2
0		R49, R50	CH1206R	Resistor	2
200		R52	CH0805R	Resistor	1
1.2k		R53	CH0805R	Resistor	1
50		R55, R56	CH1206R	Resistor	2
BN-43-302		T3, T4		BN-43-302	2
1T ADT1-6T		T5	TC1-4	TC4-1	1
BN43-302		TSWR	TANDEM	BN43-302	1
SN74HC395D		U1, U3, U7	16-SOIC	SN74HC395D	3
ULN2003BDR		U2	16-SOIC	ULN2003BDR_1	1
ADCP188RMZ-R		U4, U15, U16, U17	20-SOIC (W)	ADCP188RMZ-R	4
LT1117-ADJ		U5	SOT223	AMS117	1
AMS1117-5		U6	SOT223	AMS117	1
ADCP188RMZ		U8, U10, U11, U12, U13, U14	8-MSOP (NO PAD)	ADCP188RMZ	4
PE4302		U9		PE4302	1
FAN_OUT		U7	CON_300-62P-5.0	2-Connector	1